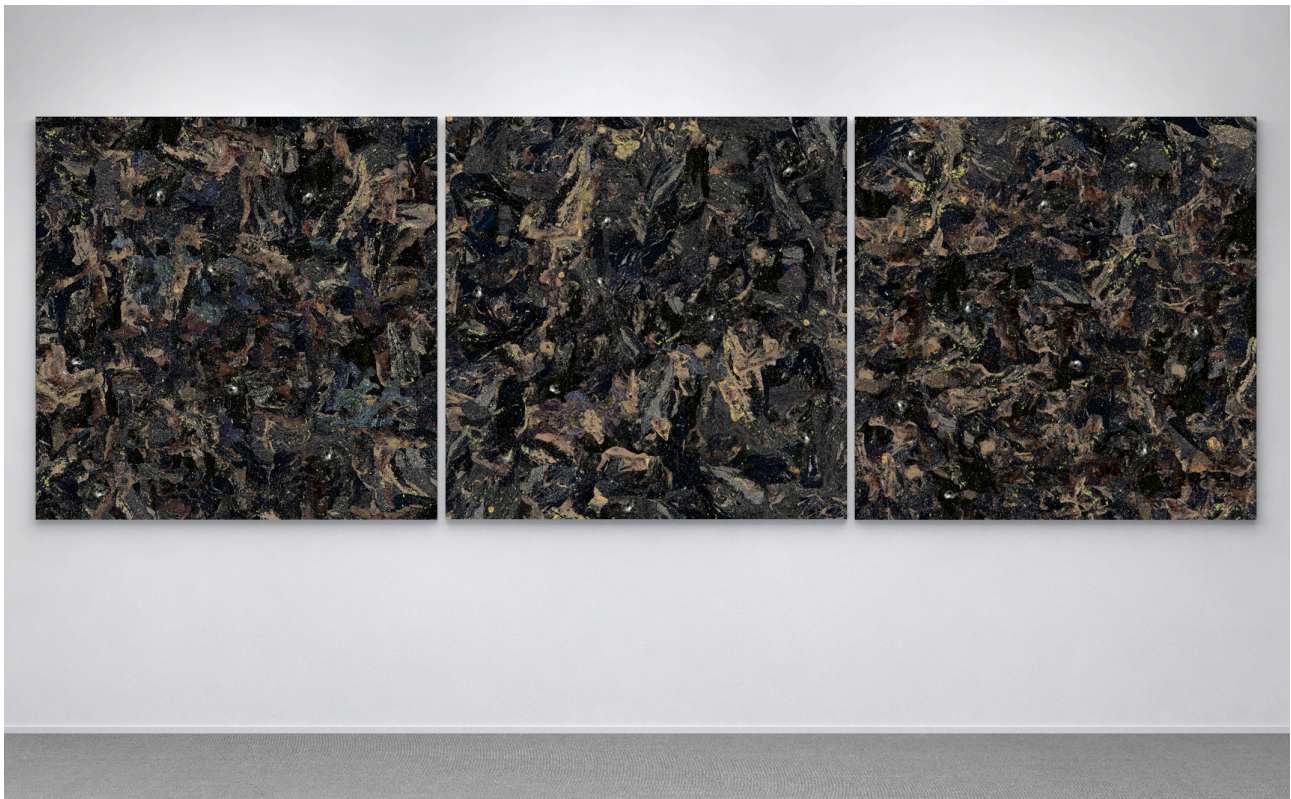


***No Man's Land* by Steve Sabella at The Palestinian Museum**

The 6 meter triptych will be exhibited in one of the most important exhibitions in his home country



No Man's Land

The Palestinian Museum will exhibit *No Man's Land* (2015) in the upcoming group exhibition *Intimate Terrains: Representations of a Disappearing Landscape* (April 2 – December 31 2019), curated by Dr. Tina Sherwell. Steve Sabella will give an artist talk 'Kan Yama Kan—The Palestinian Story' on April 6 (details on page 2).

Steve Sabella (*1975 in Jerusalem, Palestine) had eleven solos in Palestine prior to moving to London and later Berlin, where he is currently based. He is known for his imaginative use of photography and painterly photographic collages, his most recent being *The Great March of Return* (2019), including over one thousand photographs captured by five Palestinian journalists from Gaza contrasted with photos of outer space, in a monumental "present-day fresco" demonstrating a nation's eternal fight for liberation. The video art piece of *The Great March of Return* premiered at the opening night of the Gaza International Video Art Festival in February 2019.

For his 2014 series *38 Days of Re-Collection*, the artist stayed in a Palestinian home occupied by Israelis in Jerusalem since 1948, photographing every detail of the house and claiming his Right of Return. He printed these photos on fragments of paint peeled from the walls of the Old City of Jerusalem, the neighbourhood in which he was born and raised. Sabella's daring installation *Settlement: Six Israelis & One Palestinian* (2010), commissioned by MATHAF: Arab Museum of Modern Art, places the viewer in a standoff: he photographed six life-size portraits of Israeli men, standing in front of a wall similar to Israel's concrete barrier, wearing only underwear. Opposite this row is a photograph of the artist himself. Finally, there is Sabella's monument-like glass sculpture *All That Remains: Wood shard collected from Auschwitz-Birkenau concentration camp on top of fragments with photographs taken in a Palestinian house occupied by Israelis in 1948*.

No Man's Land is a surreal triptych of three collages composed from images of Lake Victoria in London. Elements from the everyday environment—rotting leaves, feathers, pollen dust—are caught in sharp detail. They are transformed in the collage process—the lake's surface appears instead like the darkness of space, with interminable depth, a topographic map or a microscopic view of the ocean floor. In turn they ask us to imagine our surroundings anew, and see even a speck of dust as representative of all the mysteries of the universe.

5 March 2019, Berlin

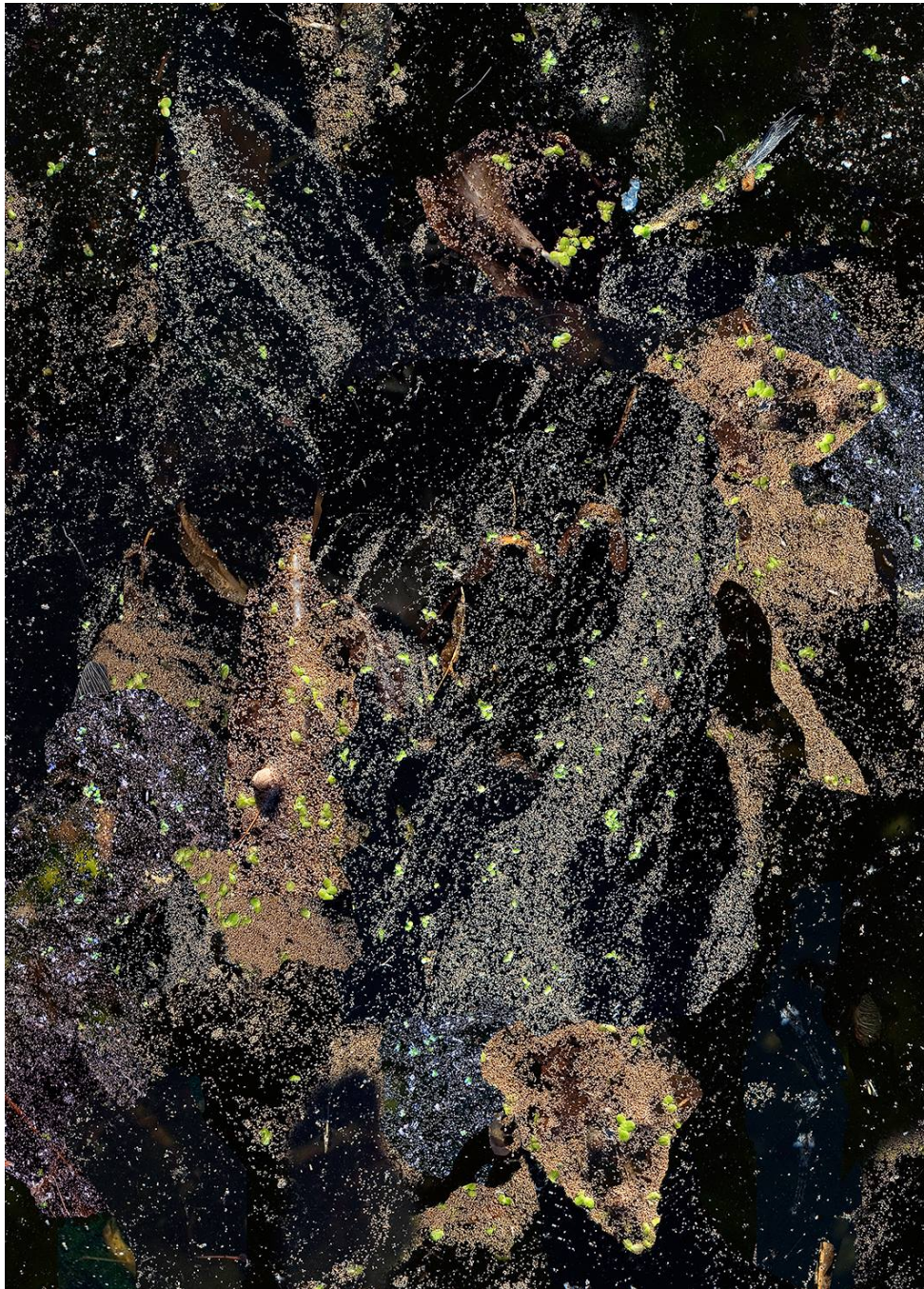
Steve Sabella is an award-winning artist, writer and public speaker. His work has been exhibited internationally and is held in collections including those of the British Museum in London, Institut de Monde Arabe in Paris and Mathaf: Arab Museum of Modern Art in Doha. Sabella holds an MA in Photographic Studies from the University of Westminster and an MA in Art Business from Sotheby's Institute of Art, London. In 2008, he received the Ellen Auerbach Award from the Akademie der Künste Berlin, including the publication of his monograph covering 20 years of art.

Artist Talk

Kan Yama Kan—The Palestinian Story

April 6, 5:30 pm

Steve Sabella will present his new multimedia installation *The Palestinian Story*, the new monumental collage *The Great March of Return* and will screen the video art piece. These new works will be contextualised by previous series including *No Man's Land*, *38 Days of Re-Collection*, *Settlement: Six Israelis & One Palestinian*, and more.



Detail of No Man's Land

For press images or more information contact Studio Manager Amanda Ribas Tugwell at art.admin@icloud.com
www.stevesabella.com